

CIVIL DEFENCE ORGANISATION  
SOUTH AUSTRALIA

C.D./R.S.2.

MANPACK AND PERSONAL EQUIPMENT

OBJECT

1. To explain the scales of personal, manpack and vehicle equipment for both light and heavy elements of Rescue.

INTRODUCTION

2. The Commonwealth is currently providing rescue equipment which is not readily available and this will be issued to the Rescue Service by State and Territorial Civil Defence Organisations. Rescue personnel are expected to complete their equipment from local resources. It should not be necessary to hold this extra equipment, but only to know where it can be obtained quickly when needed. This applies also to vehicles for the Rescue Service.

DESCRIPTION OF MANPACK AND EQUIPMENT

3. The manpack, as issued, is a three-compartment canvas pack, each compartment containing certain items of equipment and small tools. This enables the men to carry their equipment over debris and difficult obstacles, to a large extent leaving their hands free to more readily climb over or move about on loose debris. A selection of equipment useful in the early release of trapped casualties is allocated to the men forming the party, so that each carries approximately 30 - 40 lbs., additional weight. The fitting and stowage of the various items is standardised and should be adhered to in all demonstrations and practices. (See appendix). The full scale of equipment is as follows:-

PERSONAL CLOTHING AND EQUIPMENT

4. Each Rescue man will be issued with the following:

<u>Clothing</u>	<u>No.</u>
Boots	1 pair
Gaiters	1 pair
Helmet, (Fibre glass), red.	1
Overalls, navy blue	1 pair

<u>Equipment</u>	
Knife, clasp with marline spike and lanyard	1
Lantern, hand, electric	1
Webbing equipment, including manpack, first aid haversack and water bottle.	1 set

MANPACK EQUIPMENT

5. A standardised manpack has been devised for each member of a Rescue party and is composed of the following items:

Auger, 1", 12" length	1
Bands, webbing, casualty (sets of 2)	1 set
Bar, wrecking, 18"	1
Blanket	1
Bond, wire 3/8" x 15'	1
Chisel, cold, 1" blade, 8" - 12" stem	1

(Manpack Equipment, cont.)

	<u>No.</u>
Cord, sash, 15'	1
Gloves, debris	1 pair
Goggles, dust	1 pair
Hammer, club, 2½ lb.	1
Hatchet, case opening,	1
Mask, dust	1
Pliers, side cutting, insulated	1
Rope, 1½" x 40'	1
Saw, general purpose	1
Tool, entrenching	1

FIRST AID EQUIPMENT

6. Each member of the Rescue Service will be equipped with a First Aid Haversack, containing the following items:

Baking soda tablets, plastic container of 50	1
Bandages, calico 4" x 6 yards	12
Bandages, constriction	1
Bandages, triangular	3
Butterfly enclosures, packet	1
Casualty labels	25
Crayon wax	1
Dressings, first field	6
Dressings, shell	9
Drinking vessel, 8 oz.	1
Pencil, indelible	1
Salt tablets, plastic container of 50	1
Sheeting, sterilised, 3' x 3' in plastic bag	5

RESCUE VEHICLE EQUIPMENT

7. (a) Each Light Rescue Party will carry the following:

	<u>No.</u>	<u>Carried by Man When Dismounted</u>
Bar, 1" x 5', chisel point	1	No.2 (Deputy)
Bar, wrecking, 18"	2	No.2
Hammer, 7 lb.	1	No.3
½ 14' extension ladder	1	No.4
½ 14' extension ladder	1	No.5
Rope, 200' x 2"	1	No.6
Saw, general purpose	2	No.6
Shovel, short handles	1	No.7
Snatch block, 6"	1	No.7
Spanner, adjustable	2	No.8
Stretcher, Army MK2	1	No.8
Rations, hard		3 days supply.

(b) Each Heavy Party will carry the following:

	<u>No.</u>
Axe, felling - 4½ lb.	1
Bar, picket, 1" x 5', steel	6
Bar, crow, 5'6", chisel point	2
Bar, steel, 10'	1
Blankets, woollen	12
Blocks, wooden spacing	8
Blocks, snatch, 6"	1
Box, nails, mixed - 2 lb. 2"	
2 lb. 3"	1
2 lb. 4"	

(Heavy Party Equipment, cont.)

	<u>No.</u>
Buckets	4
Cutters, bolt, 5/8"	1
Cutters, pipe, 1/2" - 2"	1
Cord, sash, 15'	12
Chains, hook and ring, 6'	2
Chisel, plugging	1
Gloves, rubber, insulation	1
Hammer, claw	1
Hammer, sledge, 7 lb.	1
Ladder, 8-14' extending	1
Ladder, 16-30' extending	1
Mattock, cross grubbing	3
Poles, derrick, 20'	3
Portable lighting	2
Hydraulic Rescue set, comprising:	1
Pump, hand operated, P.76	2
Hose, 6' length with ZH-604 male half of coupler, Z-913	2
Ram 10 ton with ZR-400 female half of coupler and Z-410, R.C.75	2
Adaptor for 10 ton attachments R-75 - 38A	2
Smooth saddle, R-75 - 45A	2
Hydraulic wedgie with ZR-400 female half of coupler and Z-410 cap, S.A. -4	1
Deep Reach Spread Jaws for attachment to R.C.75 ram, similar to S.A.7 without built in ram	1
Flat Base, Z-14	2
Ram Toe, Z-30	2
Plunger Toe, Z-9	2
Pump, stirrup	2
Rations, hard	3 days' supply for eight men.
R.B.A. Sets	2
Rope, manilla or sisal, 3" - 200'	1
Rope, manilla or sisal, 2" - 200'	1
Rope, manilla or sisal, 1 1/2" x 40'	12
Rope, wire, 5/8" x 50'	2
Saw, hand	1
Saw, Bushman's, 36"	1
Saw, Cross-cut, 6'	1
Shackle, 'D' type	1
Shovels, medium,	2
Shovel, short	2
Spanner, crescent, 15"	1
Screwdrivers, 9"	2
Stretchers, folding (Army MK2)	6
Tarpaulin, 10' x 10' approx.	1
Tape, measuring 6'	1
Tirfor, hauling and lifting, type T.13	1
Snatch block for Tirfor	1
Wrench, Stillson, 30"	1
Wheelbarrow	1
Wedges, wooden	8
 <u>Optional Equipment</u>	
Chain saw	1
Oxy-Acetylene curring torch, complete	1
Acetylene cylinder	1
Oxygen cylinders	2
Portable pump, 4,000 g.p.h.	1
Portable lighting unit (electric)	1

Radiac Equipment

- Coln. H.Q. 6 dosimeters. One for each Officer and each D.R. 1 charging unit to be held by the driver.
- Coy. H.Q. (if required). 4 dosimeters. One for each Officer and D.R. 1 Charging unit to be held by the driver.
- Platoon H.Q. 3 dosimeters. One for each Officer and the D.R.
- Rescue Party. 1 dosimeter to be carried by Party Leader.

CONCLUSION

It has been the purpose of this circular, to outline the manpack and personal equipment used by Rescue personnel. This equipment will enable Rescue Parties to work forward from their vehicles into heavily damaged areas, carrying out the major portion of the rescue tasks facing them.

-----oOo-----



Fig. 1.

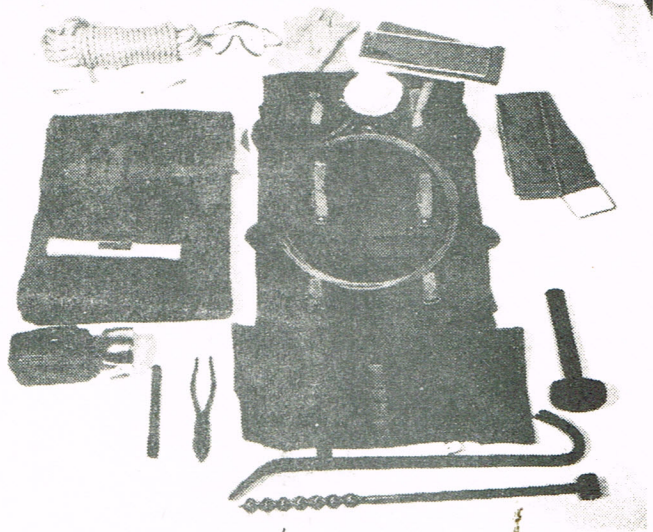


Fig. 2.

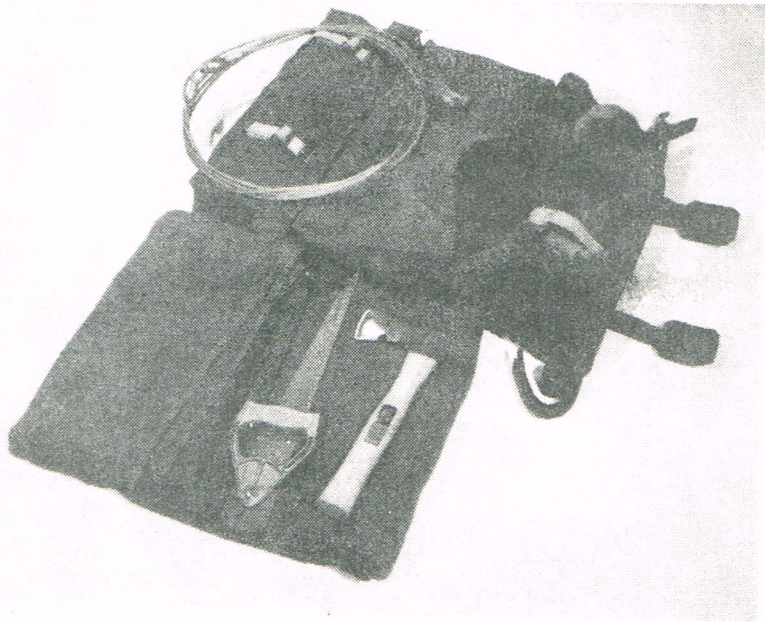


Fig. 3.

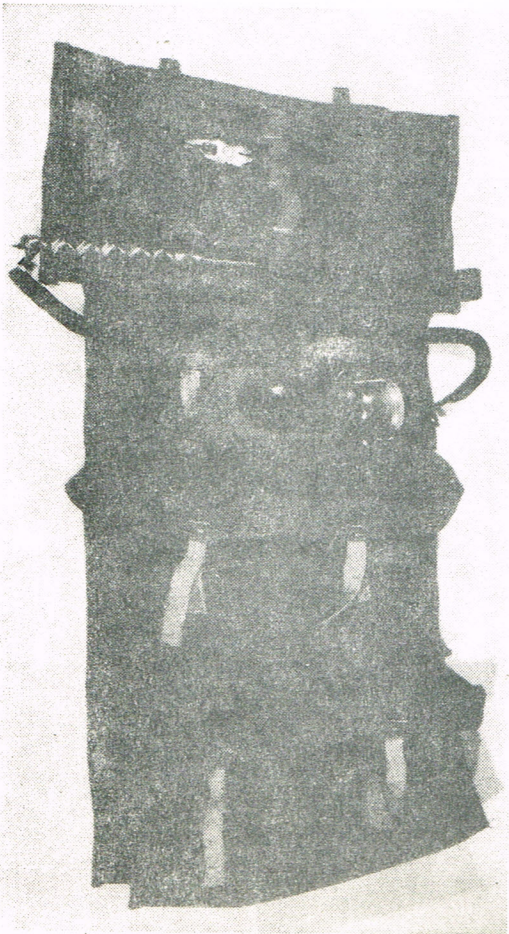


Fig. 4.



Fig. 5.